



PME ENCLOSURE RANGE

ALUMINIUM & STAINLESS STEEL ENCLOSURES



The PME enclosure range is available as 2mm marine grade Aluminium powder coated T33 smoke blue or as 316 stainless steel.

The enclosures are suitable for housing a range of electrical and data communications equipment and come complete with 6mm galvanised steel pole mounting brackets. The PME enclosures can be pole mounted, wall mounted or alternatively can be pedestal mounted to the Logix R3L POST.

Typical applications where PME enclosures have been used include:

- Variable Message Signs
- Variable Speed Signs (VSS)
- Bluetooth Installations
- CCTV

CONTACT US

TONY HAMILTON

tony@logixeng.com.au
0434 034 703

MARK ELLIOTT

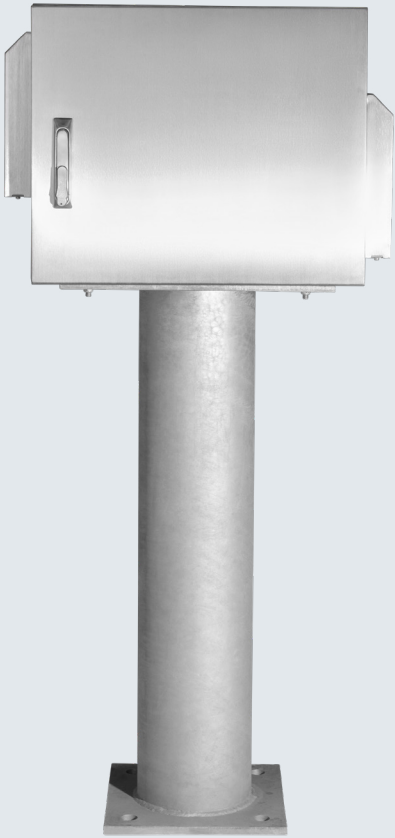
mark@logixeng.com.au
0432 272 585

GLENN BROOKS

glenn@logixeng.com.au
0417 010 788

28 Boron St, Sumner Park, Brisbane QLD 4074 Australia logixeng.com.au

LOGIX
ENGINEERING



FEATURES

1. Powdercoated corrosion resistant 2mm aluminium or 1.5mm 316 stainless steel
2. Hinged door fitted with door-stay
3. Fan inlet cover fitted with IP55 filter media
4. Fan 12V DC or 240V AC to customer requirements
5. Ventilation outlet fitted with IP55 filter media
6. 2mm mild steel powdercoated mounting panel – fitted 50mm from rear of panel
7. Enclosure mounting brackets 6mm galvanised steel
8. Robust extruded aluminium or stainless steel concealed hinges

Part Number	Height (mm)	Width (mm)	Depth (mm)	Weight (kg)	Description
PME050603/A	500	600	300	15	Aluminium Unwired
PME050603/S	500	600	300	27	Stainless Steel Unwired
PME100603/A	1000	600	300	38	Aluminium Unwired
PME100603/S	1000	600	300	58	Stainless Steel Unwired
PME100603/S/W/S	1000	600	300	75	Stainless Steel Wired
PME100604/S	1000	600	400	80	Stainless Steel Unwired
R3L POST	1000	-	-	63	Galvanised Pedestal
R3L RAG	-	-	-	11	Rag Bolt Assembly

The standard wiring of enclosures includes a 9 way non-metallic loadcentre, 100A 1P main switch, 3 x 6A RCD, 2 x double GPO's, fan, thermostat, and surge filter divider.

